

INSTALLATION OF IWIN

Read the following installation instructions carefully and perform the recommended steps.

1. UPDATING AN EXISTING INSTALLATION

If an old version of the iWIN program is already installed on the computer, perform the following steps:

- Start the old version of the iWIN program.
- In the menu **Options ⇒ Settings**, open the **"Interface"** page and note the COM port (e.g., COM1) displayed to the right of **"Standard"**.
- If necessary, save the parameter sets recorded on the old version: open menu **Parameters ⇒ Send/receive (PC ⇔ Card)** and export all parameter sets ("Export" button ⇒ All parameter sets). Save the file e.g., as *iValvePara.prm* in the suggested folder and close the window.

2. UNINSTALLING AN OLD VERSION

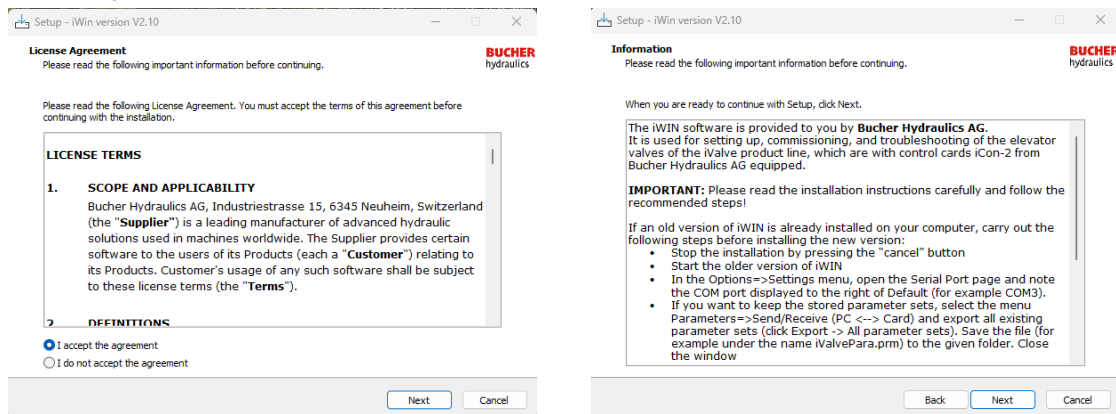
If an old version of the iWIN program needs to be uninstalled from the computer, perform the following steps:

- Close all programs. Uninstall the old iWIN version (if necessary, refer to Windows Help to find out how to uninstall programs).

3. INSTALLING A NEW VERSION

If you want to install a version of the iWIN program on the computer, perform the following steps (these may take some time):

- Navigate to the installation file *Install_iWIN_2pXX_300-DE.exe* (XX = program version) – either via **Start ⇒ Run ⇒ Search** or via **Windows Explorer**.
- Double click on the installation file *Install_iWIN_2pXX_300-DE.exe* to start it. After a short while, the installation dialog is displayed.
- Dialogs regarding the license terms and general information (see the following figures) guide you through the installation.



- Continue to click on the **"Next"** buttons (e.g., install/finish) one after the other until the installation is complete. If selected, a shortcut is automatically saved on the desktop.
- **Start** program *iWIN V2.XX*. (XX = program version).
- To define the interface for the exchange of data between iWIN (PC) and iCon (control card), open the **"Interface"** page in the menu **Options ⇒ Settings**, select the previously noted or an available interface and select the *Standard* checkbox.
- If the previously exported parameter sets are to be reused, open the menu **Parameters ⇒ Send/receive (PC ↔ Card)** and import the previously stored file (e.g. *iValvePara.prm* in the suggested folder) by clicking on **Import ⇒ All parameter sets**.

Before closing the window, click on the  button (update data).

- Open the curve recording window (menu **Measurements ⇒ Curves**). If the travel curve file *iValve.dat* stored with the old version contains more than 300 curves, they are automatically stored in a file with the name *YYMMDD_HHMMSS_iValve.dat* (YY = year / MM = month / DD = day / HH = hours / MM = minutes / SS = seconds of storage) and a new empty file is opened.
- Refer to the assembly and commissioning instructions of the respective lift control valves iValve/VF-iValve in order to familiarize yourself with the further settings options and a description of the parameters.

4. CONNECTING AN ICON/ICON-2 CONTROL CARD TO A PC/LAPTOP

Options for connecting an iCon/iCon-2 to a PC/laptop:



Connection options:

- Connection to a serial interface (RS232) with Bucher adapter.
- Connection to a USB interface via a USB-RS232 converter (with Bucher adapter).



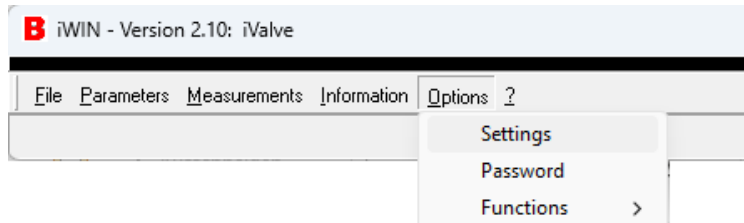
IMPORTANT:

Never connect an iCon/iCon-2 control card to the Ethernet port on a PC/laptop!

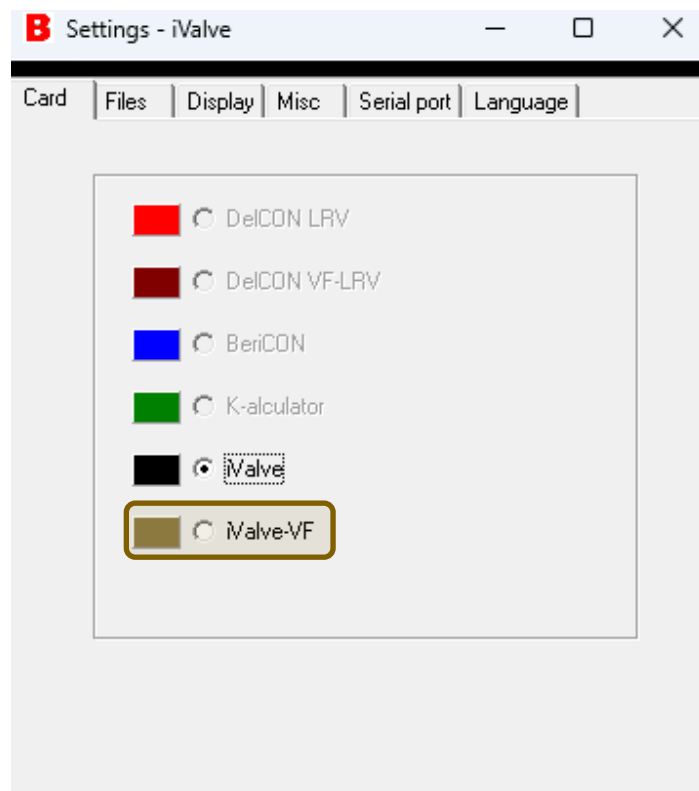
5. SETTINGS FOR VF-IVALVE OPERATION WITH A FREQUENCY CONVERTER

If iWIN is to be used for a VF-iValve (together with frequency converter), the program must be set accordingly:

- In the software, click on **Options ⇒ Settings**.



- In the dialog field that opens, select the **iValve-VF** option and click on OK to confirm.



Publisher

Bucher Hydraulics AG

Industriestrasse 15
6345 Neuheim
Switzerland

Phone: +41 41 757 03 33

Email: elevator@bucherhydraulics.com

Website: www.bucherhydraulics.com

© 2026 Bucher Hydraulics AG, 6345 Neuheim, Switzerland

All rights reserved.

This documentation, in whole and/or in part, is protected by copyright.

It may not be reproduced, nor may it be stored, processed, replicated, or distributed by electronic means, without written permission from Bucher Hydraulics.

Data is provided for the purpose of product description only, and must not be construed as warranted characteristics in the legal sense.

No assertion regarding either a particular property or the fitness for a particular intended purpose can be derived or deduced from this information.

The information does not relieve users from the duty of conducting their own evaluations and tests. Because the products are subject to continual improvement,

we reserve the right to amend the product specifications contained in this catalog. The original and legal language of the documentation of Bucher Hydraulics is exclusively German. Bucher Hydraulics shall not be held liable for any errors in the translation.